

## **105/30-ton overhead crane**

### **General**

**Capacity:** 105/30 ton

**Supply Voltage:** 525 V.A.C. – 3 phase

**Control Voltage:** 220 Contr. V

**Crane Span:** 22.860m

**Crab Span:** 6.705m

**Mass:** 174.7 ton

### **Main Hoist**

**Motor:** 525V, 160kW, 730rpm

**Gearbox ratio:** 1:109.9

**Brake drum:** 2 x 584mm diameter

**Brake:** 2 x 584mm El. Magn. Type SM

**Max Lifting height:** 18.2m

**Rope Drum:** 2 x 889mm – RH / LH grooves

**Rope size:** 32mm diameter

**Plate hooks:** 52.5 ton

**Sheave wheels:** 8 x 787mm diameter

### **Auxiliary Hoist**

**Motor:** 525V, 108kW, 730rpm

**Brake drum:** 2 x 482mm diameter

**Brake:** 2 x 482mm El. Magn. Type SM

**Max Lifting height:** 21m

**Rope drum:** 609mm diameter Left / Right hand. 18 grooves each.

**Rope size:** 20.5mm diameter

### **Long Travel**

**Motors:** 4 x 525V, 20kW, 730rpm

**Brake drum:** 330mm diameter

**Brake Thruster:** 330mm Hydraulic. Type SM

**Gearbox:** Double reduction 27.2: 1

**Drive & trailing wheel:** 914mm diameter

### **Cross Travel**

**Motor:** 525V, 20kW, 730rpm

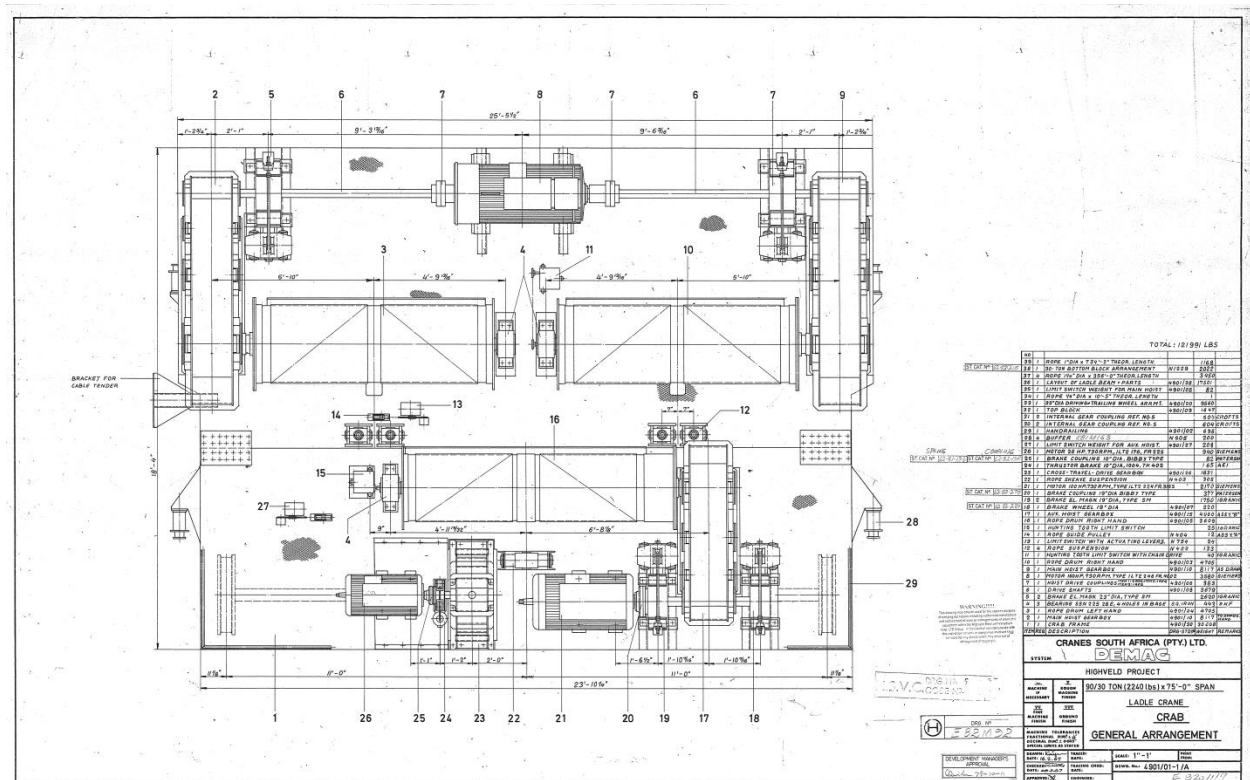
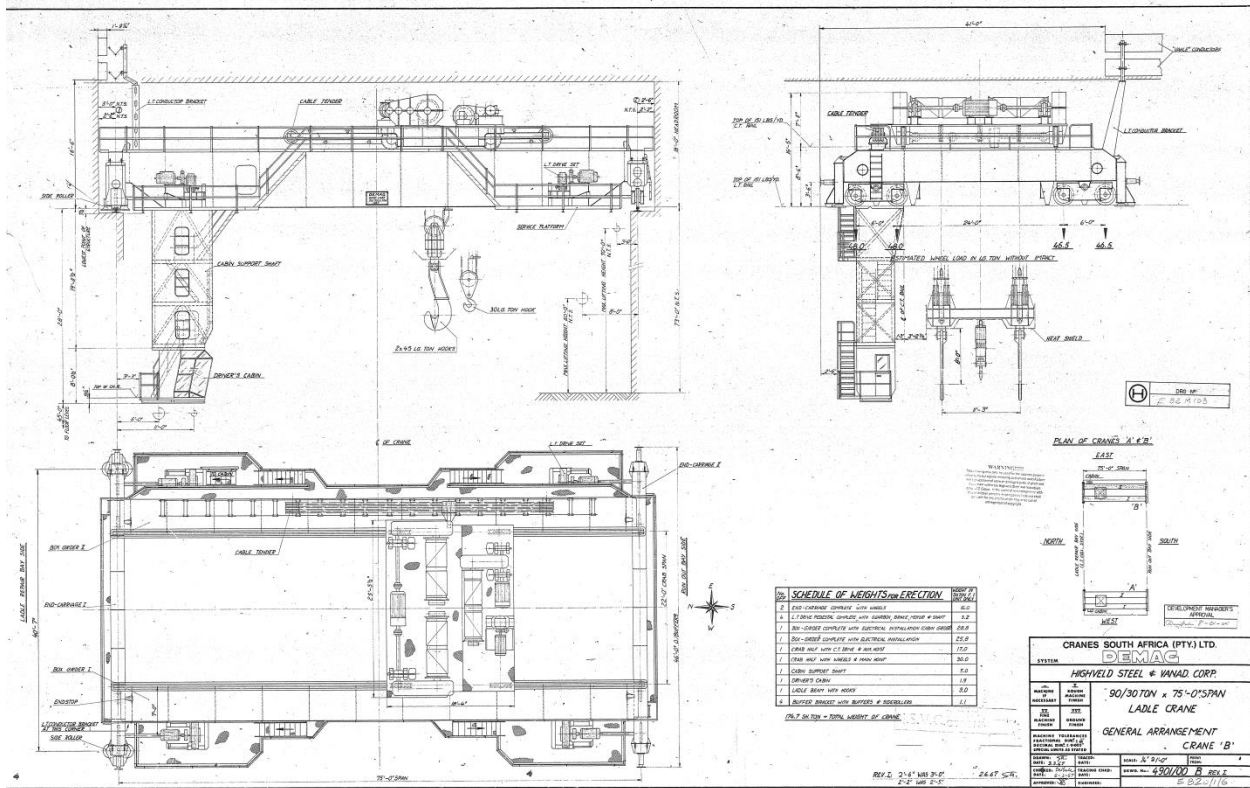
**Brake drum:** 254mm diameter

**Brake Thruster:** 254mm. TK402

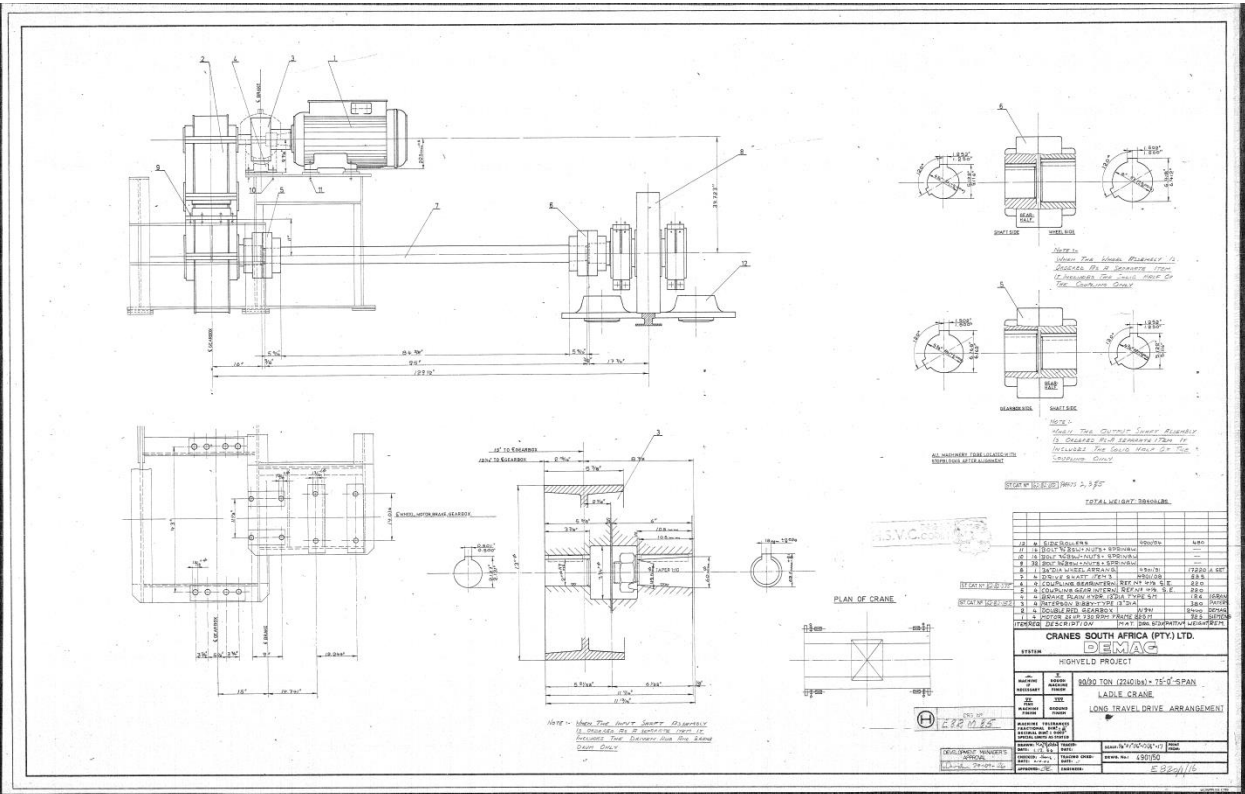
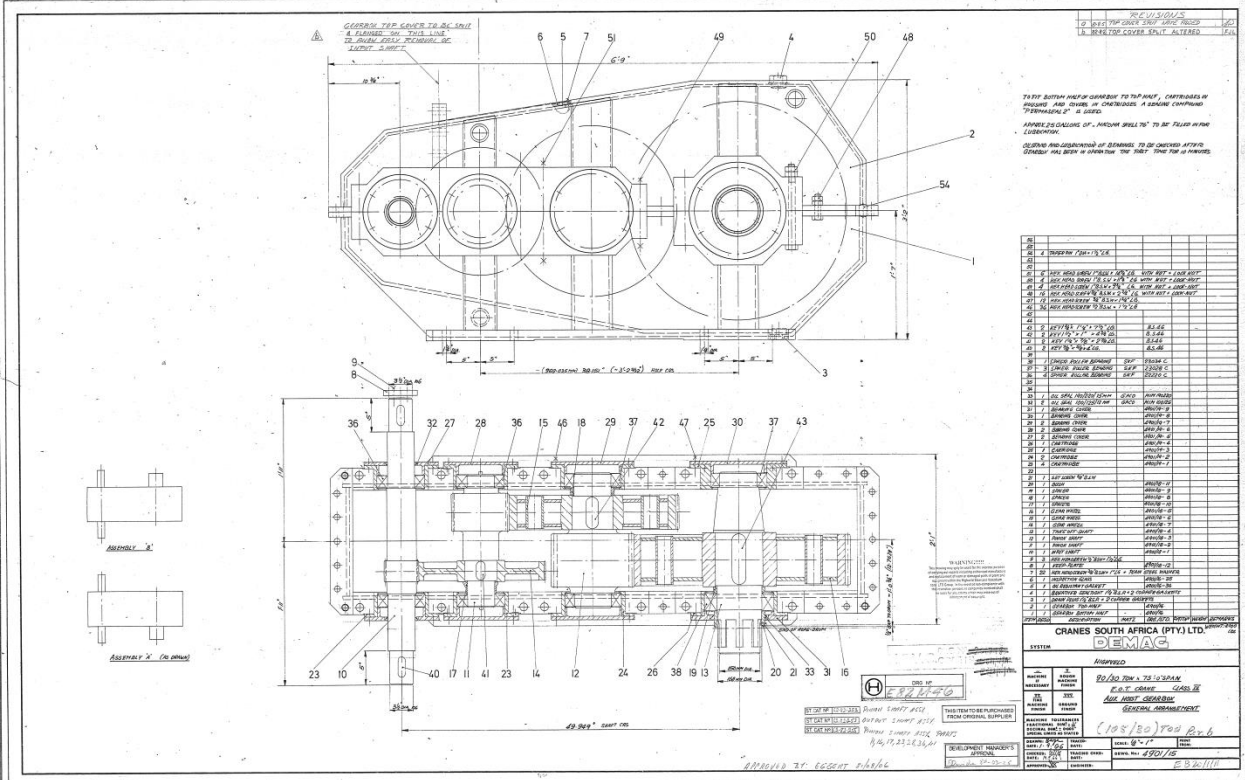
**Gearbox:** Double reduction 27.2: 1

**Drive & trailing wheel:** 838mm diameter

# Drawings







Photographs



